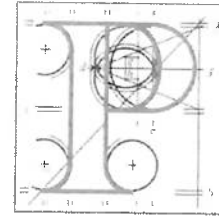


Our Case Number: ABP-321776-25



**An
Bord
Pleanála**

Brothers of Charity Services West Region
Kilcornan House,
Clarinbridge
Co. Galway
H91 K2E9

Date: 07 March 2025

Re: BusConnects Galway: Dublin Road Development
R338 Dublin Road, Galway City.

Dear Sir / Madam,

An Bord Pleanála has received your recent submission in relation to the above-mentioned proposed road development and will take it into consideration in its determination of the matter.

Please note that the proposed road development shall not be carried out unless the Board has approved it or approved it with modifications.

The Board has also received an application for confirmation of a compulsory purchase order which relates to this proposed road development. The Board has absolute discretion to hold an oral hearing in respect of any application before it, in accordance with section 218 of the Planning and Development Act 2000, as amended. Accordingly, the Board will inform you in due course on this matter. The Board shall also make a decision on both applications at the same time.

If you have any queries in relation to this matter please contact the undersigned officer of the Board at laps@pleanala.ie

Please quote the above-mentioned An Bord Pleanála reference number in any correspondence or telephone contact with the Board.

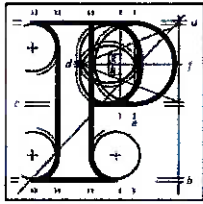
Yours faithfully,

Lauren Griffin
Executive Officer
Direct Line: 01-8737244

HA02A

Tell	Tel	(01) 858 8100
Glaos Áitiúil	LoCall	1800 275 175
Facs	Fax	(01) 872 2684
Láithreán Gréasáin	Website	www.pleanala.ie
Ríomhphost	Email	bord@pleanala.ie

64 Sráid Maoilbhríde	64 Marlborough Street
Baile Átha Cliath 1	Dublin 1
D01 V902	D01 V902



An
Bord
Pleanála

Observation on a Strategic Infrastructure Development Application

Observer's details

1. Observer's details (person making the observation)

If you are making the observation, write your full name and address.

If you are an agent completing the observation for someone else, write the observer's details:

(a) Observer's name

Brothers of Charity Services West Region – Dave O'Halloran

(b) Observer's postal address

Kilcornan House, Clarinbridge, CO Galway, H91K2E9

Agent's details

2. Agent's details (if applicable)

If you are an agent and are acting for someone else **on this observation**, please **also** write your details below.

If you are not using an agent, please write "Not applicable" below.

(a) Agent's name

Not applicable

(b) Agent's postal address

Click or tap here to enter text.

Postal address for letters

3. During the process to decide the application, we will post information and items to you or to your agent. For this **current application**, who should we write to? (Please tick ✓ one box only)

You (the observer) at the postal address in Part 1

☒

The agent at the postal address in Part 2

☐

Details about the proposed development

4. Please provide details about the **current application** you wish to make an observation.

- (a) **An Bord Pleanála case number for the current application (if available)**
(for example: 300000)

321776

- (b) **Name or description of proposed development**

Bus Connects Galway: Dublin Road Development Compulsory Purchase
Order No. BCGDR-CPO-001-2025

- (c) **Location of proposed development**

(for example: 1 Main Street, Baile Fearainn, Co Abhaile)

Dublin Road, Galway City.

Observation details

5. Grounds

Please describe the grounds of your observation (planning reasons and arguments). You can type or write them in the space below. There is **no word limit** as the box expands to fit what you write.

You can also insert photographs or images in this box. (See part 6 – Supporting materials for more information).

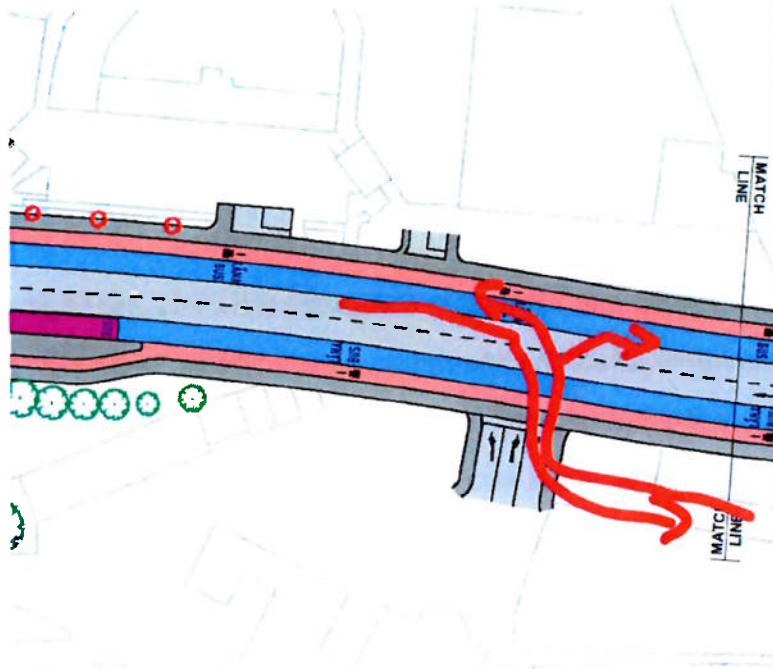
To Whom it may concern,

I would like to highlight with regards to this proposed CPO and its associate works the potential to affect the operation of our services and traffic entering our campus from the Dublin road.

The Woodlands Campus hosts two special needs schools and a variety of support services. I would request that detailed review and support to ensure no interruption to operation of service during the development of proposed works in this area.

During the early phase of the project, review of the effect of school traffic was considered and reviewed with the City Council but now with the development of a new school on the campus I would like to ensure all consideration is given to the bus vehicles entering the east campus entrance and turning left towards the new school access road as per sketch and image below.

5. Grounds



Supporting materials

6. If you wish, you can include supporting materials with your observation.

Supporting materials include:

- photographs,
- plans,
- surveys,
- drawings,
- digital videos or DVDs,
- technical guidance, or
- other supporting materials.

You can insert photographs and similar items in your observation details: grounds (part 5 of this form).

If your supporting materials are physical objects, you must send them together with your observation by post or deliver it in person to our office. You cannot use the online uploader facility.

Fee

7. You **must** make sure that the correct fee is included with your observation.

Observers (except prescribed bodies)

- strategic infrastructure observation is €50.
- there is no fee for an oral hearing request

Oral hearing request

8. If you wish to request the Board to hold an oral hearing, please tick the "Yes, I wish to request an oral hearing" box below.

You can find information on how to make this request on our [website](#) or by contacting us.

If you do not wish to request an oral hearing, please tick the "No, I do not wish to request an oral hearing" box.

Yes, I wish to request an oral hearing

☐

No, I do not wish to request an oral hearing

☒

Final steps before you send us your observations

9. If you are sending us your observation using the **online uploader facility**, remember to save this document as a Microsoft word or PDF and title it with:

- the case number and your name, or
- the name and location of the development and your name.

This also applies to prescribed bodies sending an observation by email.

If you are sending your observation to us by post or delivering in person, remember to print off all the pages of this document and send it to us.

For Office Use Only

FEM – Received		SIDS – Processed	
Initials		Initials	
Date		Date	

Notes